



**KMetronome 0.9.2** for Mandriva Linux 2010.0 & 2009.1

MIDI Metronome for Linux

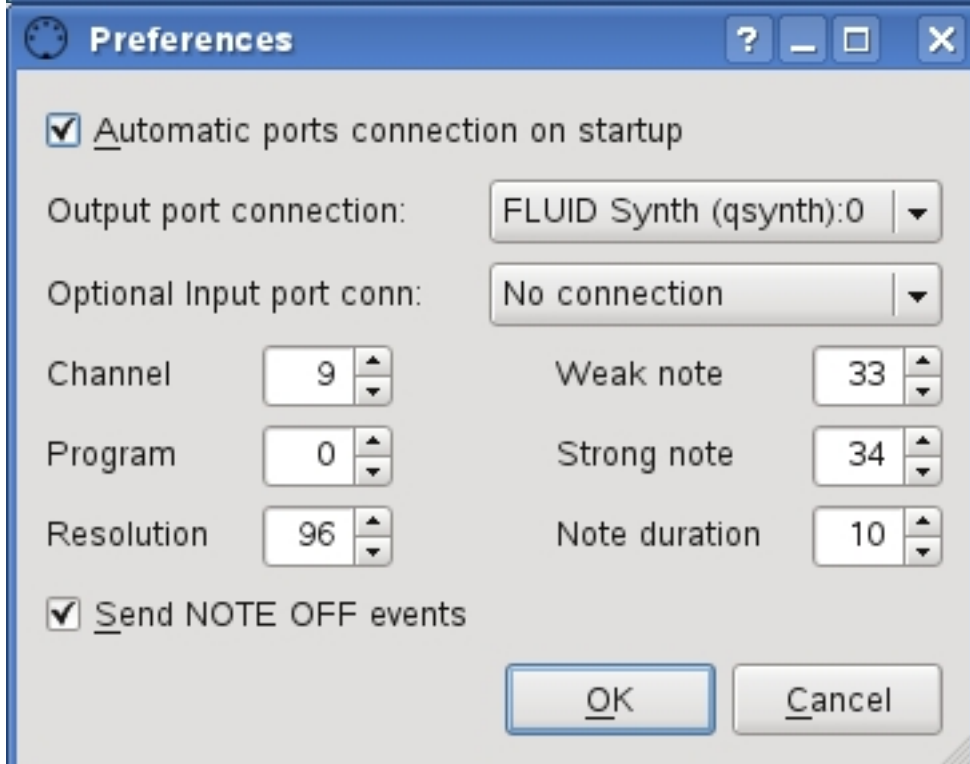
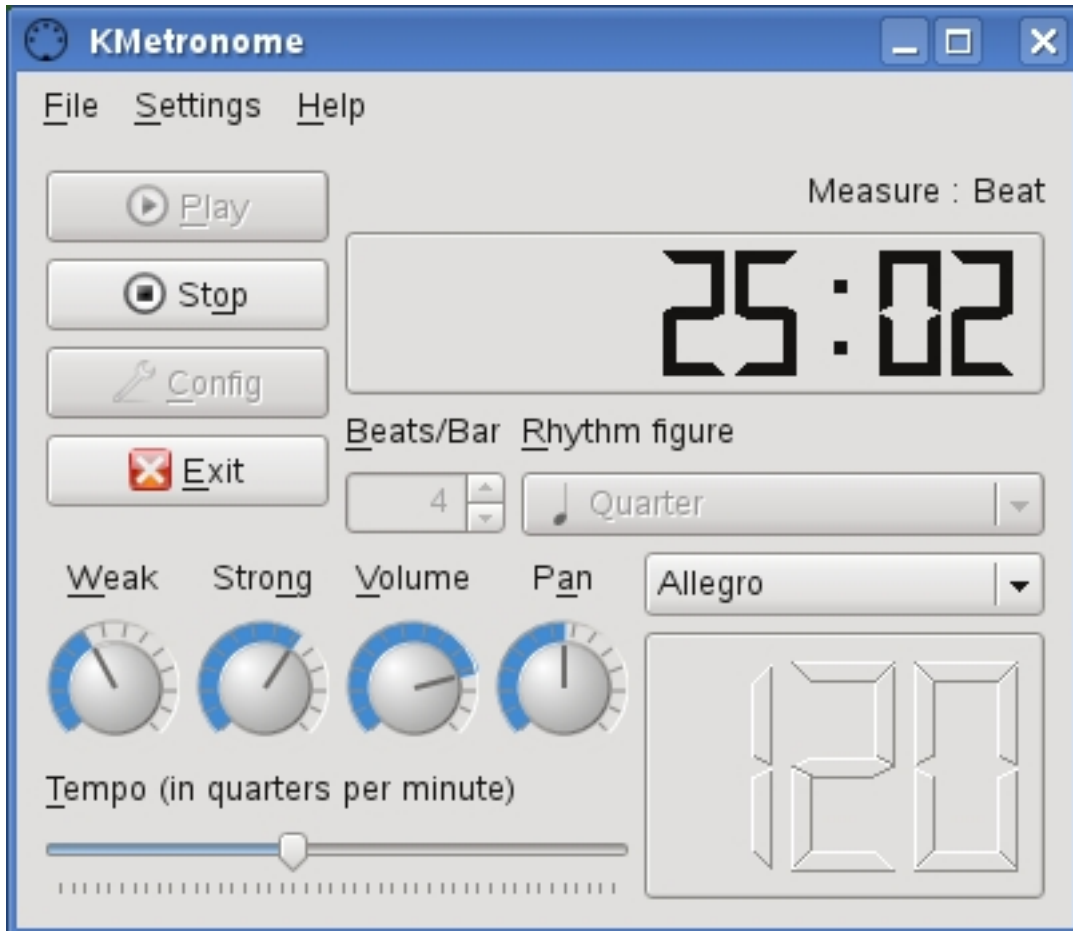
KMetronome is a MIDI based metronome using the ALSA sequencer.

The intended audience are musicians and music students. Like the solid, real metronomes it is a tool to keep the rhythm while playing musical instruments.

It uses MIDI for sound generation instead of digital audio, allowing low CPU usage and very accurate timing thanks to the ALSA sequencer.

**Homepage:**

<http://kmetronome.sourceforge.net/kmetronome.shtml>



FLUID Synth (qsynth):0 Sound Font

The screenshot displays three overlapping windows from the JACK Audio Connection Kit ecosystem:

- Connections - JACK Audio Connection Kit:** Shows the configuration of audio and MIDI connections. Under 'Audio', '130:KMetronome' is connected to '130:KMetronome' in the 'Writable Clients / Input Ports' list.
- JACK Audio Connection Kit [(default)] Started:** Shows the JACK daemon status as 'Started RT 9.4% 48000 Hz'. It includes controls for Start, Stop, Messages, Status, Connect, Patchbay, and About...
- KMetronome:** The main metronome interface. It features a large digital display showing '6:03' (Measure: Beat). Controls include Play, Stop, Config, and Exit buttons. It also has settings for Beats/Bar (set to 4), Rhythm figure (Quarter), and Tempo (in quarters per minute) with a slider.
- Qsynth - A fluidsynth Qt GUI Interface [FluidSynth]:** A synthesizer interface with sections for Master (Gain: 100), Reverb (Room: 90, Damp: 70, Width: 66, Level: 70), and Chorus (N: 23, Level: 20, Speed: 13, Depth: 50). It includes a 'Type' dropdown set to 'Sine' and a volume meter.

At the bottom of the screenshot, there is a small icon of a person and a line of text: "E-mail: [oriam73@protonmail.com](mailto:oriam73@protonmail.com) ALSA home page: <http://www.alsa-project.org/>

E-mail: [oriam73@protonmail.com](mailto:oriam73@protonmail.com) ALSA home page: <http://www.alsa-project.org/>